

TP 9 des architectures logicielles

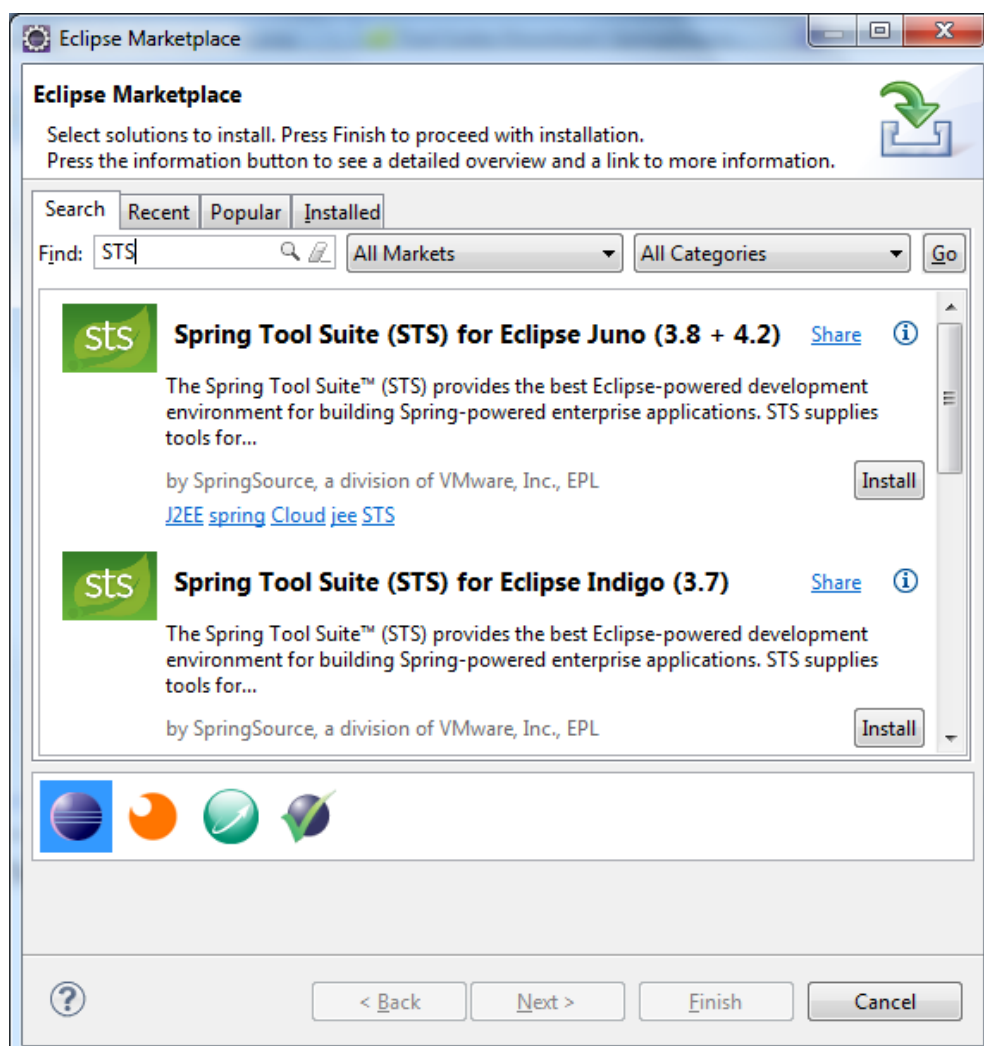
Séance 9 : Installation STS IDE pour Spring Framework

Install Spring Tool Suite for existing Eclipse IDE

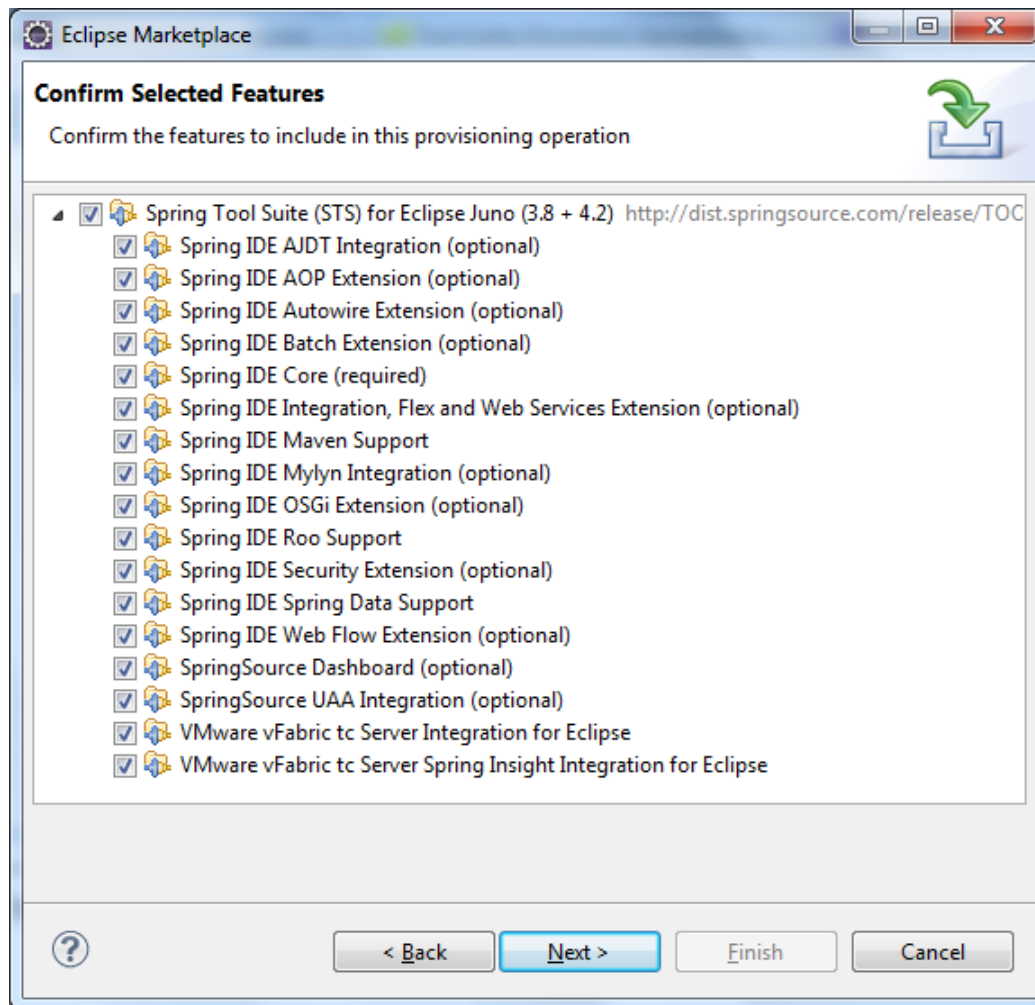
[Spring Tool Suite](#) (STS) is an Eclipse-based IDE which is optimized for developing Spring framework-based projects. It can be either installed as a standalone IDE or as a plug-in in Eclipse. If you are already using Eclipse IDE, you may consider installing STS as a plug-in for your existing Eclipse, because that's faster than downloading the STS separately.

Installing STS from within Eclipse IDE is pretty simple, follow these steps:

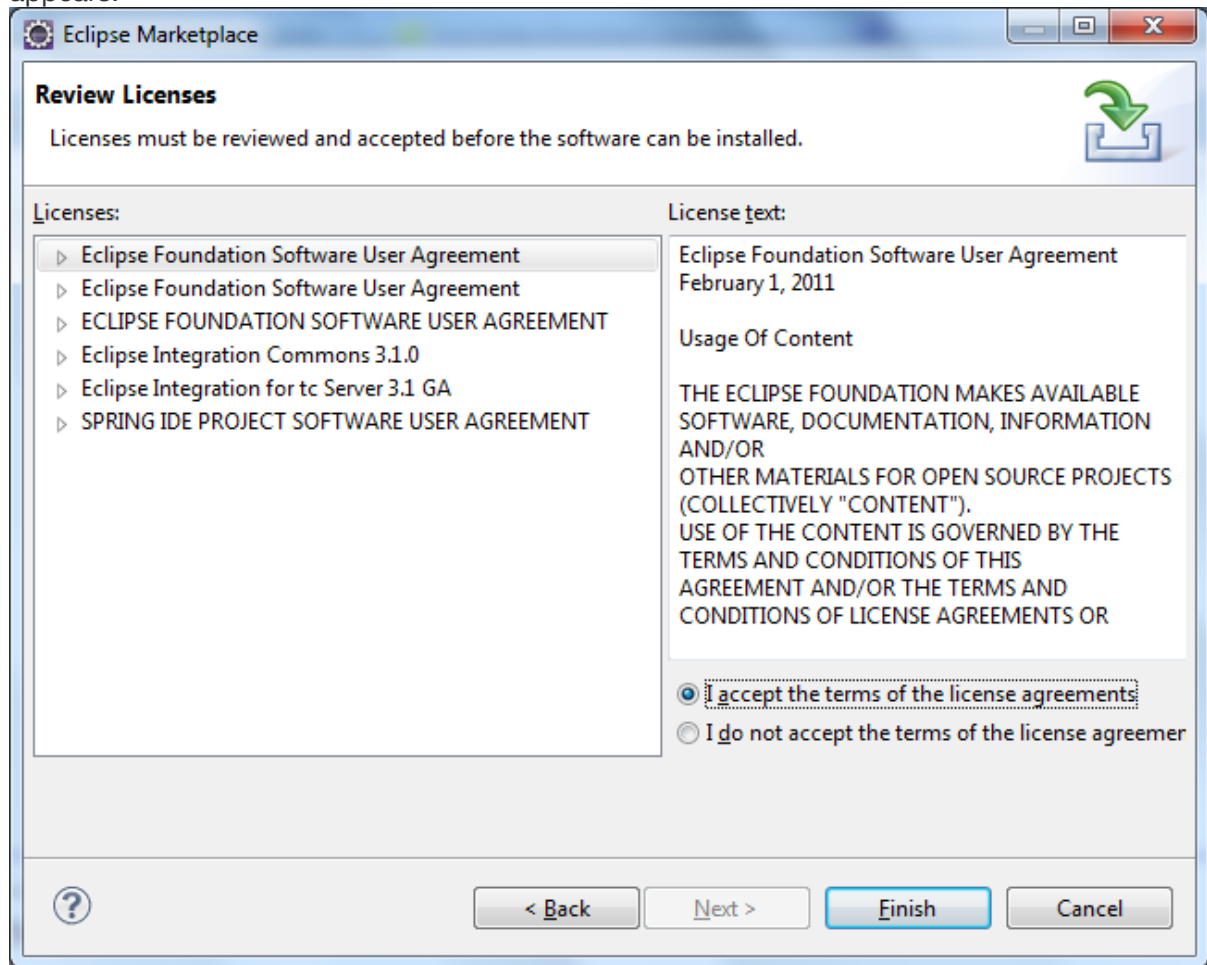
- Click **Help > Eclipse Marketplace...** from Eclipse's main menu. The *Eclipse Marketplace* dialog appears, type *Spring Tool Suite* or *STS* into the *Find* textfield and hit **Enter**. Eclipse will send query to its server and display results as shown below:



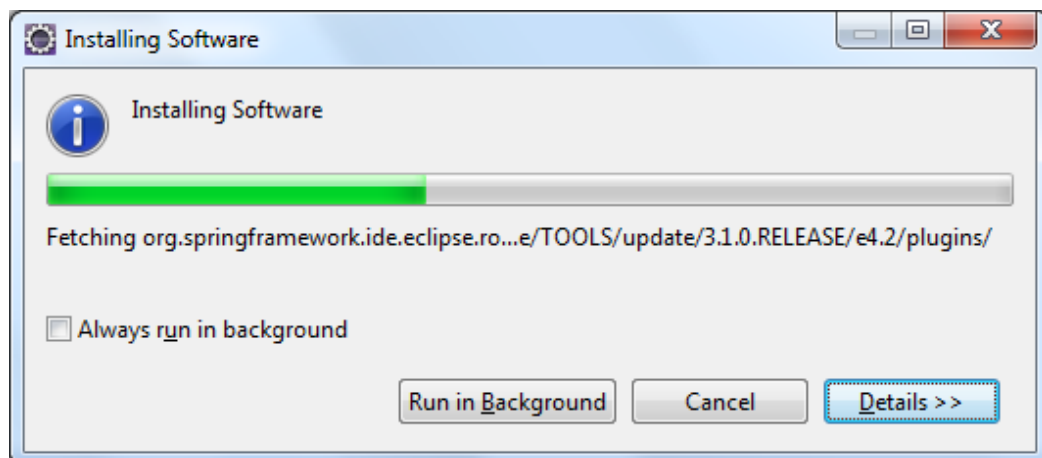
- Select the version that matches your Eclipse's version and click **Install** button. Here we select *Spring Tool Suite (STS) for Eclipse Juno (3.8 + 4.2)*. It takes a while for Eclipse to fetch the details and show the features of STS as shown below:



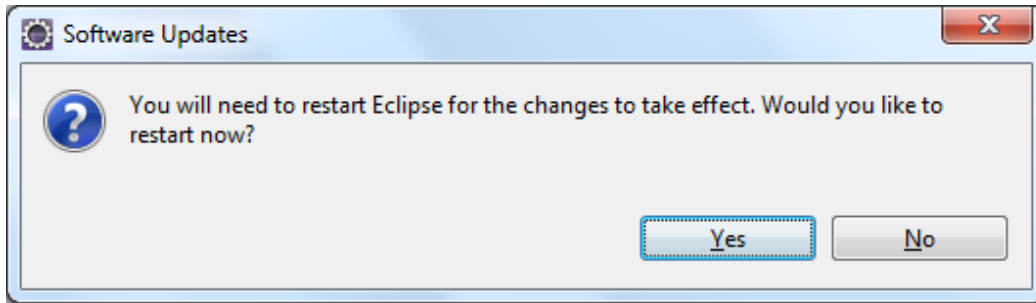
- All features are selected by default, click **Next**. The **Review Licenses** screen appears:



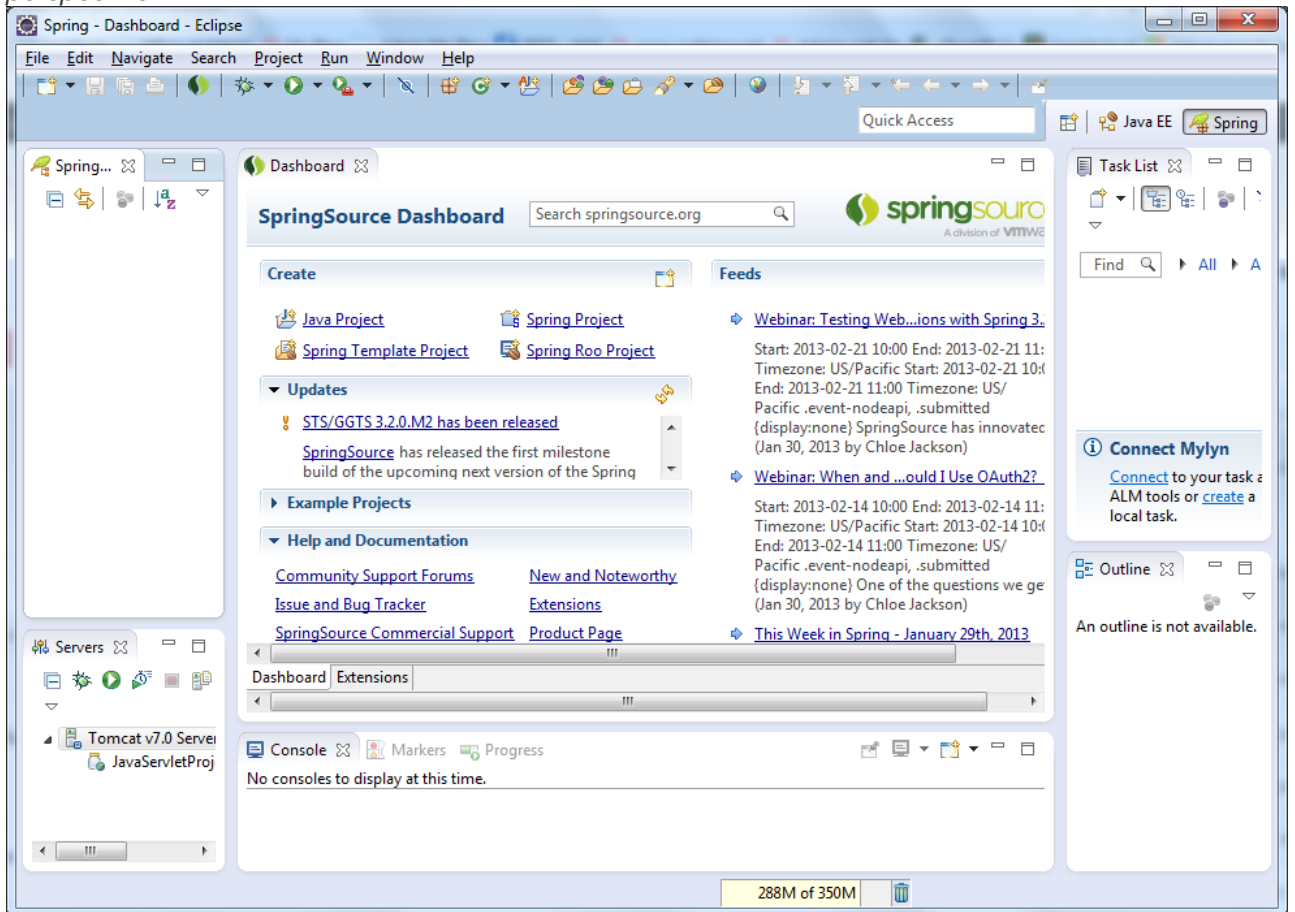
- Select *I accept the terms of the license agreements*, and then click **Finish**. Eclipse will install STS and display the progress:



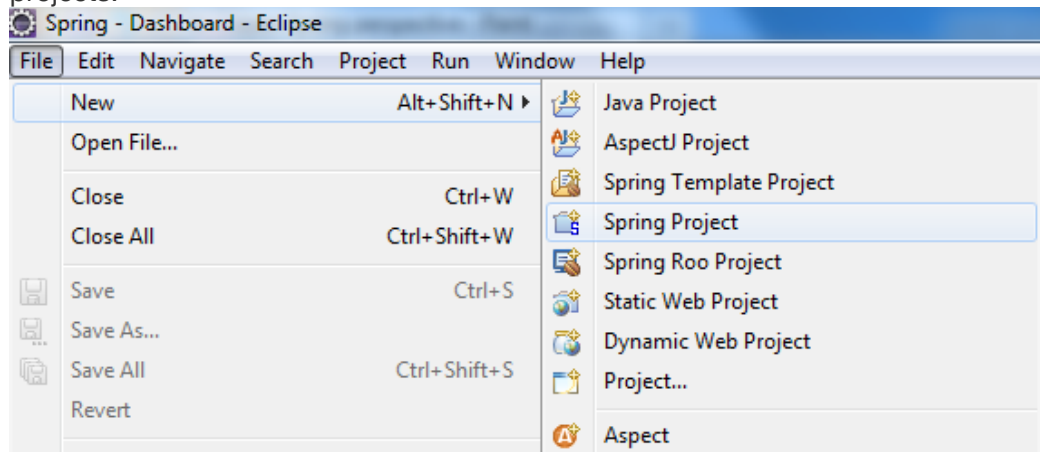
- After the installation completed, Eclipse asks to restart the IDE:



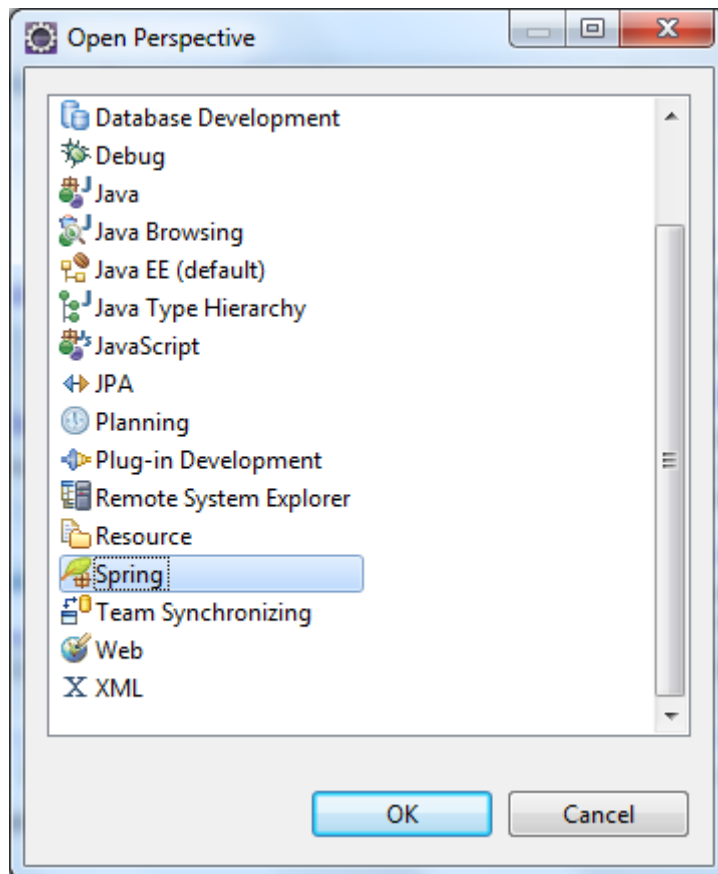
- Click **Yes** to restart the IDE. When Eclipse restarted, you will see some Spring natures are added to the IDE. The first thing is *Spring perspective*:



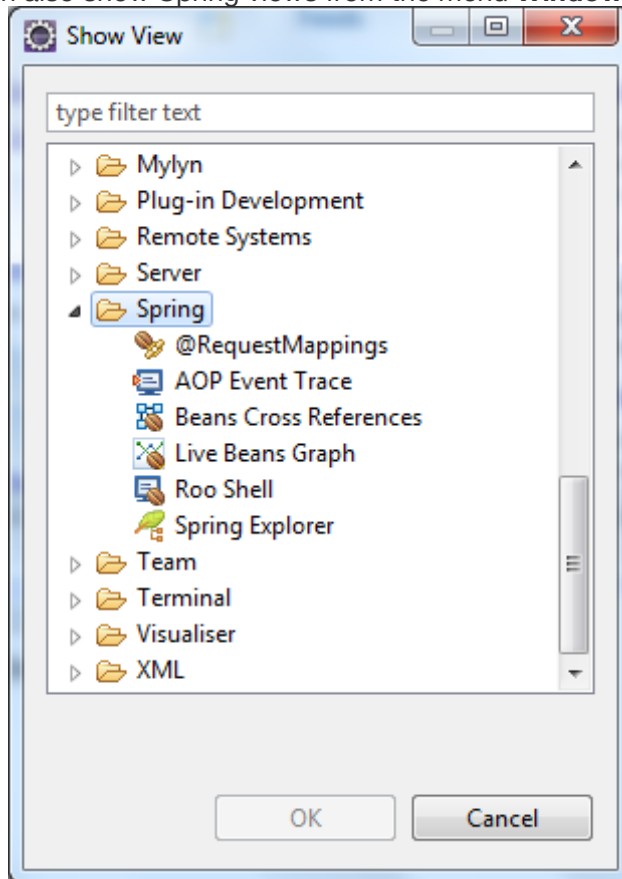
- The menu **File > New** now comes with some Spring projects:



- The menu **Window > Open Perspective** now has Spring perspective:

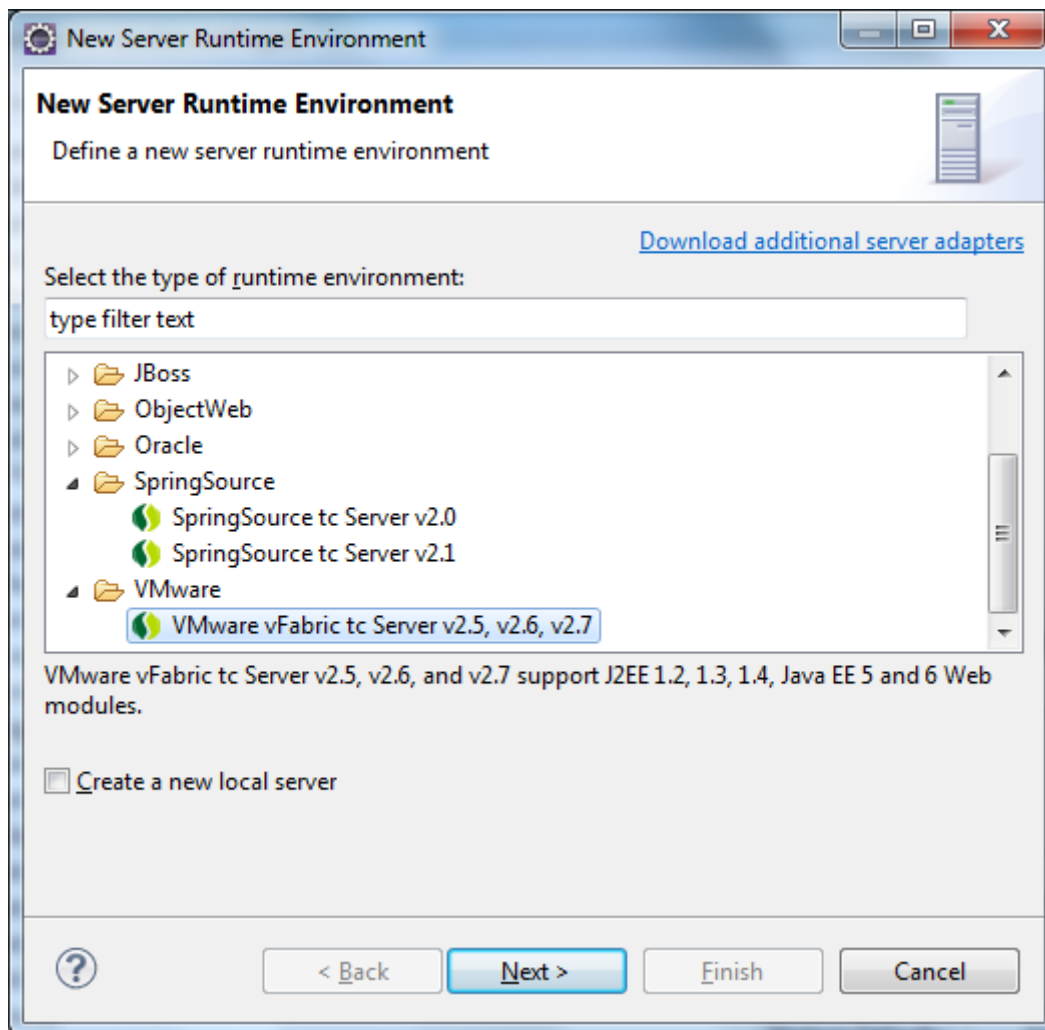


- We can also show Spring views from the menu **Window > Show**



View:

- And new options in the *New Server Runtime Environment* dialog:



Now you are ready to develop your Spring-based projects in your favorite Eclipse IDE.